



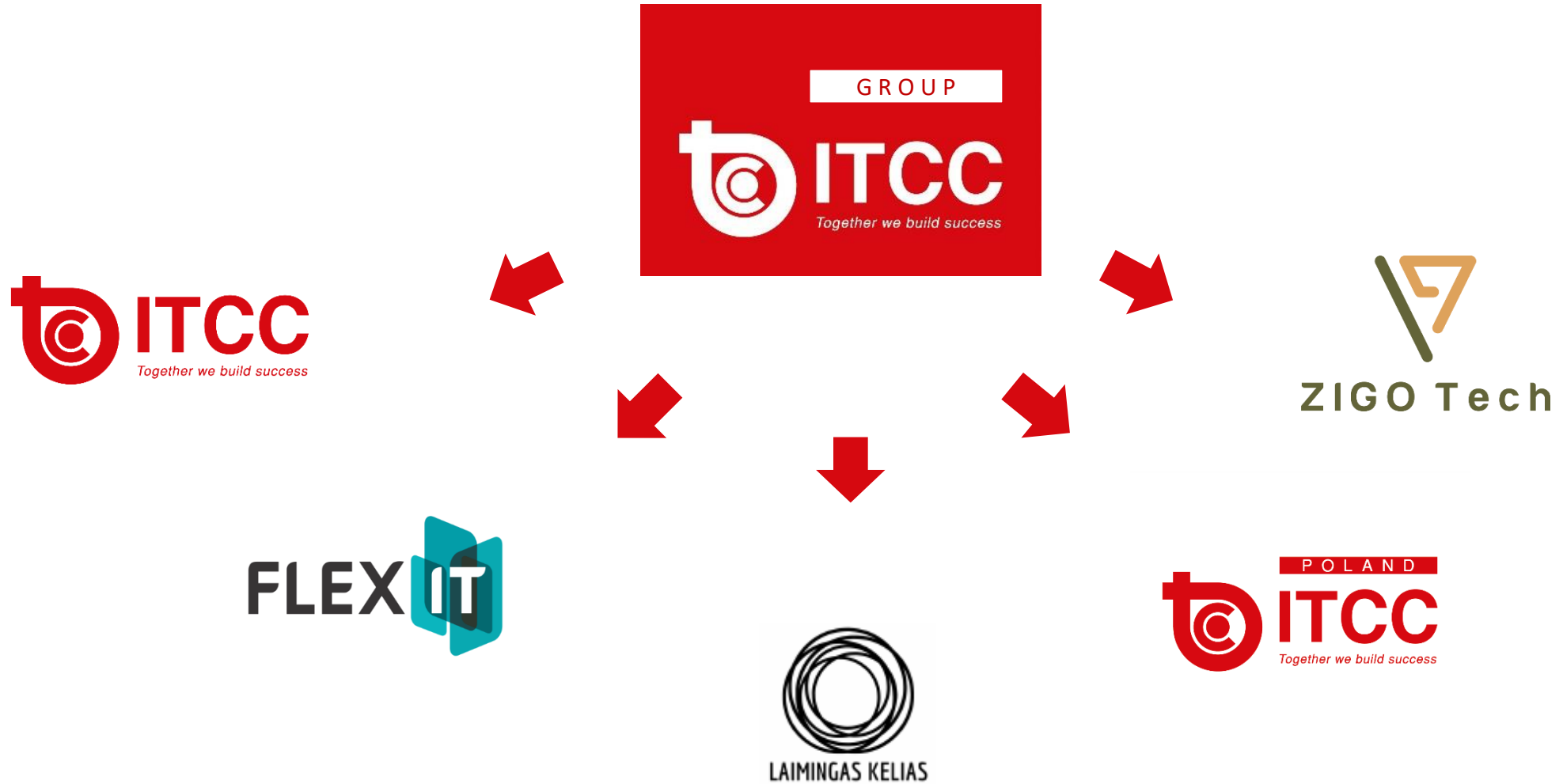
**TOGETHER
WE
BUILD
SUCCESS**

COURAGE TO CHANGE IS EMPOWERED BY ACHIEVING MILESTONES

August 5th, 2022
JSC ITCC

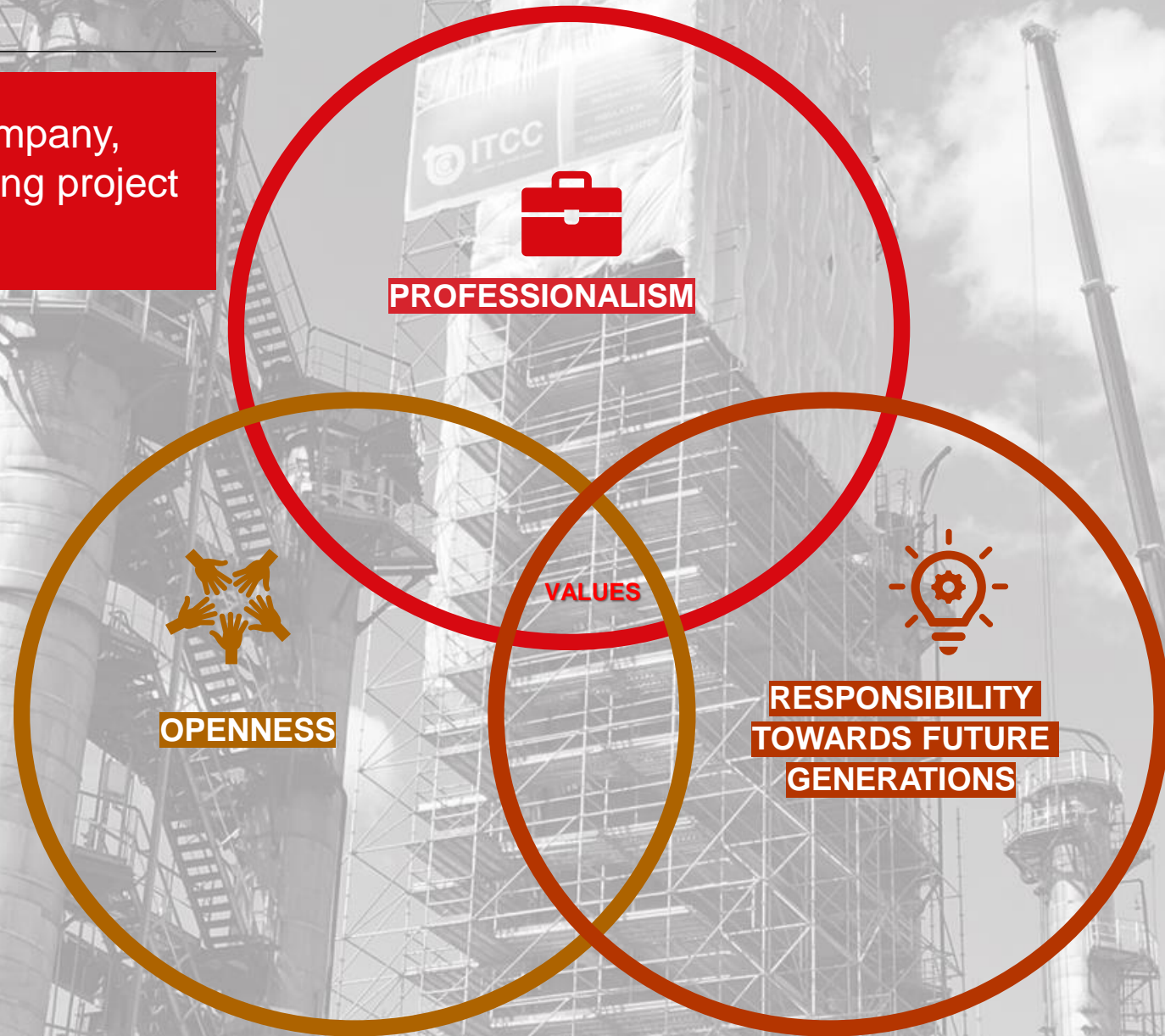


STRUCTURE



ITCC VISION

To be responsible and innovative company,
which is the first choice for engineering project
management.



ITCC EVOLUTION



A LONG TIME AGO

KEEP BUSY



THESE DAYS

BE EFFICIENT



DAY AFTER
TOMORROW

BE RESPONSIBLE

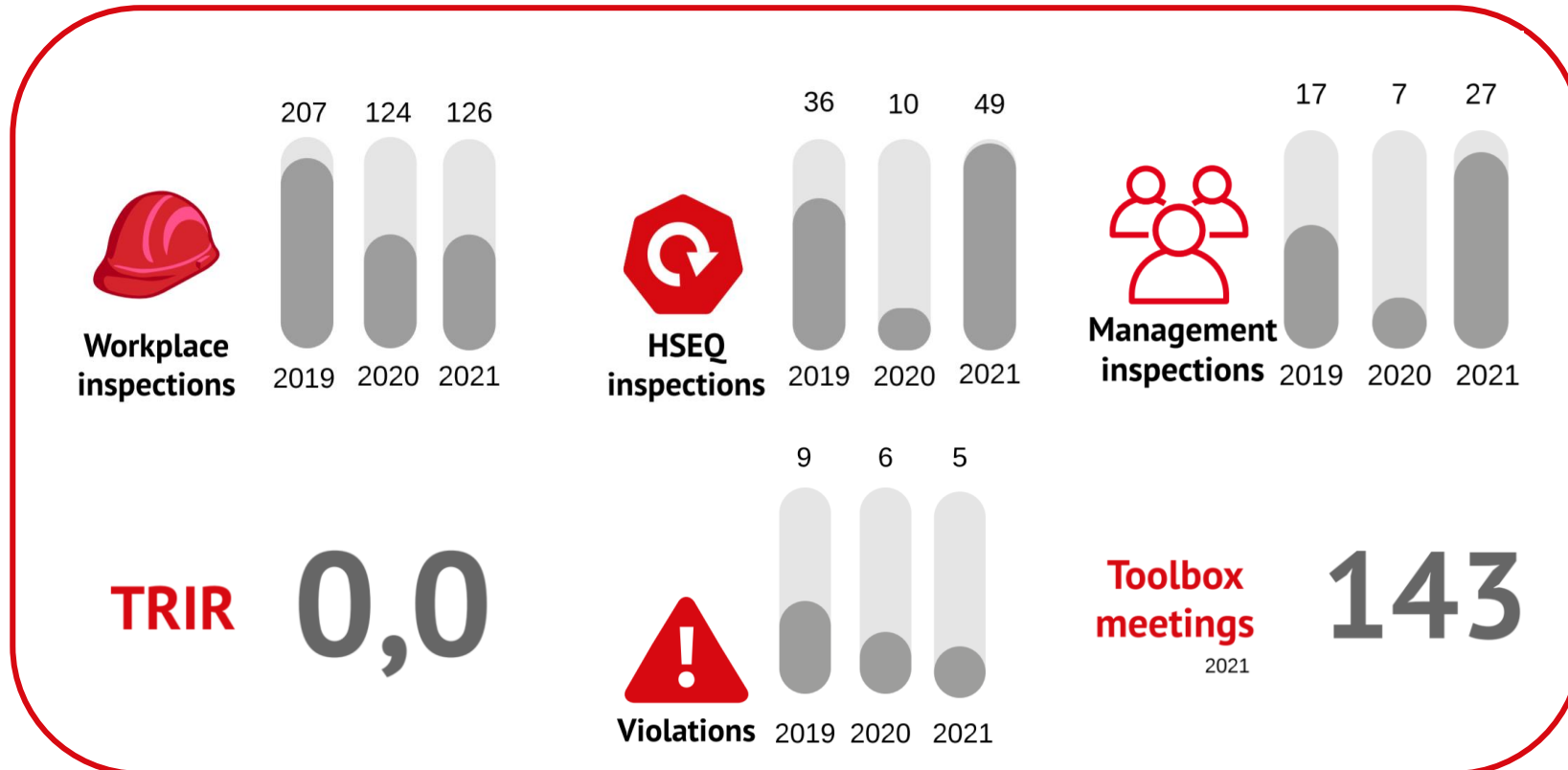


SUSTAINABILITY

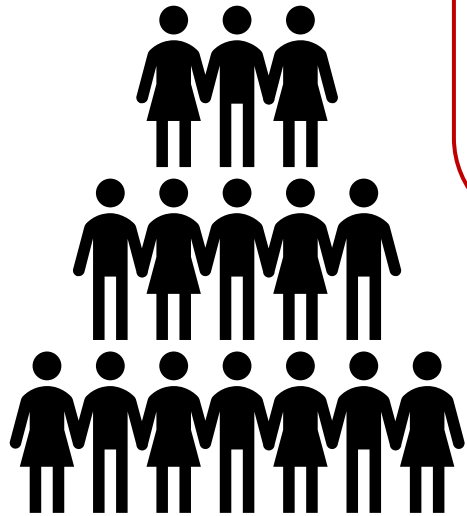
- **Business sustainability:**
pursuit for a stable and profitable progress and compliance with good business practices.
- **Social sustainability:**
a socially responsible employer contributing to the social progress.
- **Environmental sustainability:**
ensuring environmental protection through active efforts to reduce the impact of its and customers' activities on the environment and efficient use of resources.



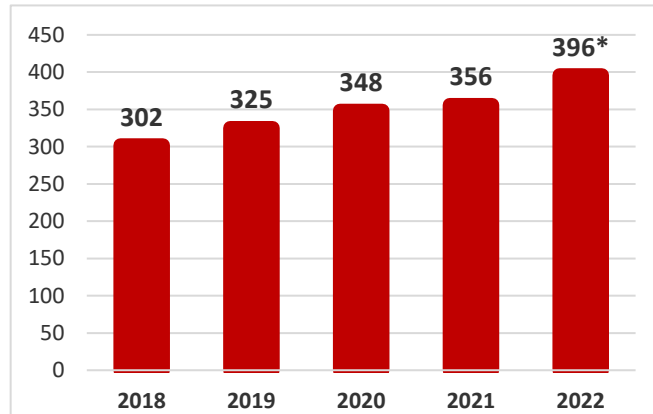
SUSTAINABLE GROWTH. Quality and Safety.



SUSTAINABLE GROWTH. PEOPLE.



Total number of employees



Attractive work benefits and valuing of each worker makes ITCC a well-desired Employer and allows us to grow.

ITCC does not use subcontracting and takes full responsibility.

Nationalities



SUSTAINABLE GROWTH. BEST KNOW-HOW.

ITCC COMPETENCE CENTER

CERTIFICATE COURSES

SCAFFOLDING COURSES[®]

Dutch Richtlijn Steigers

INSULATION COURSES[®]

CINI Manual

VCA COURSES

B-VCA

VOL-VCA

VIL-VCU

ITCC ACADEMY

CONTINUOUS EDUCATION

15 courses for Insulators and Scaffolders

Foreman program

Courses for office team

COMPETENCE CENTER

QUALIFICATION TESTS FOR:

Scaffolders

Insulators

Prefabrication Specialists

ITCC SERVICES



© EYLASER



SCAFFOLDING



We specialize in:
SCAFFOLDING ERECTION
SCAFFOLDING DISMANTLING

3D Scaffolding designs according to
EC 3 standards: modelling, linear
analysis, results, reports, made with
Scia Engineer 20 software.

We use high
quality LAYHER scaffolding system

Owned by ITCC:
1040 t



X 42

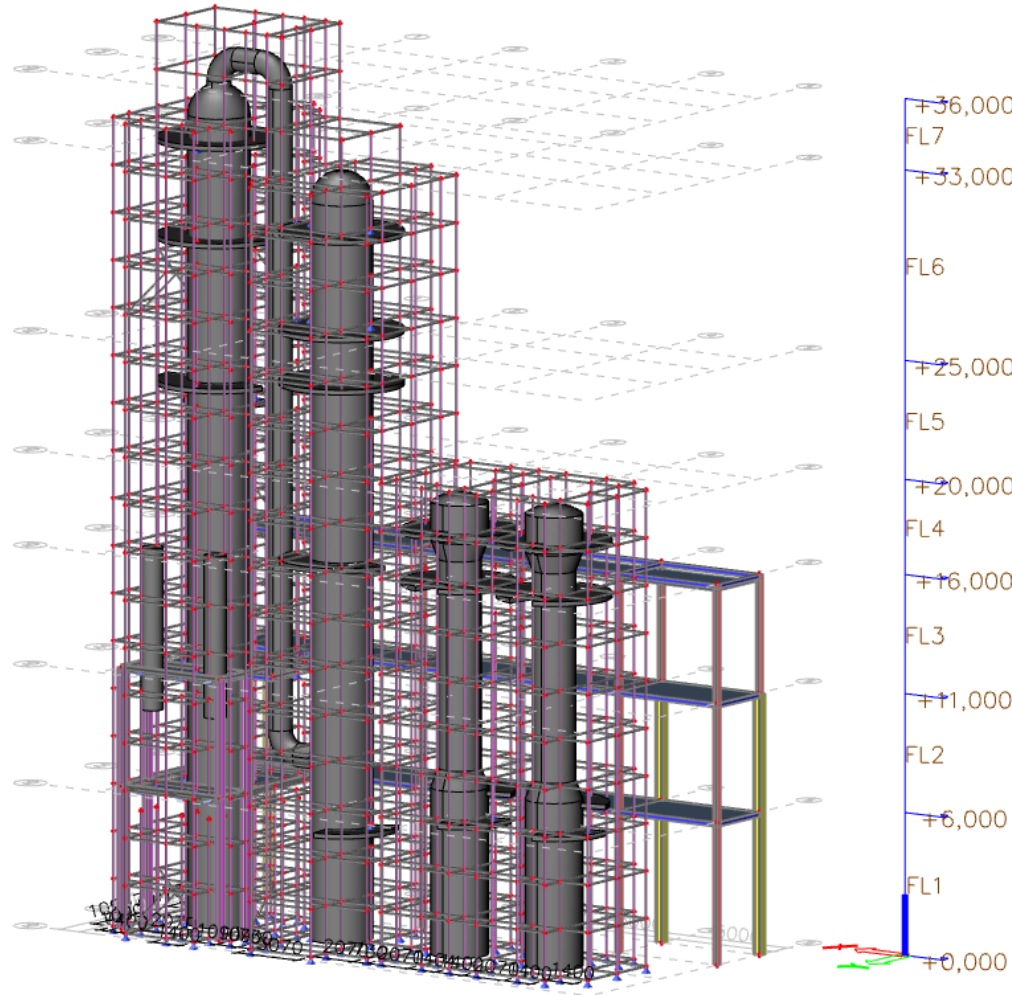
Capacity with partners:
10 000 t



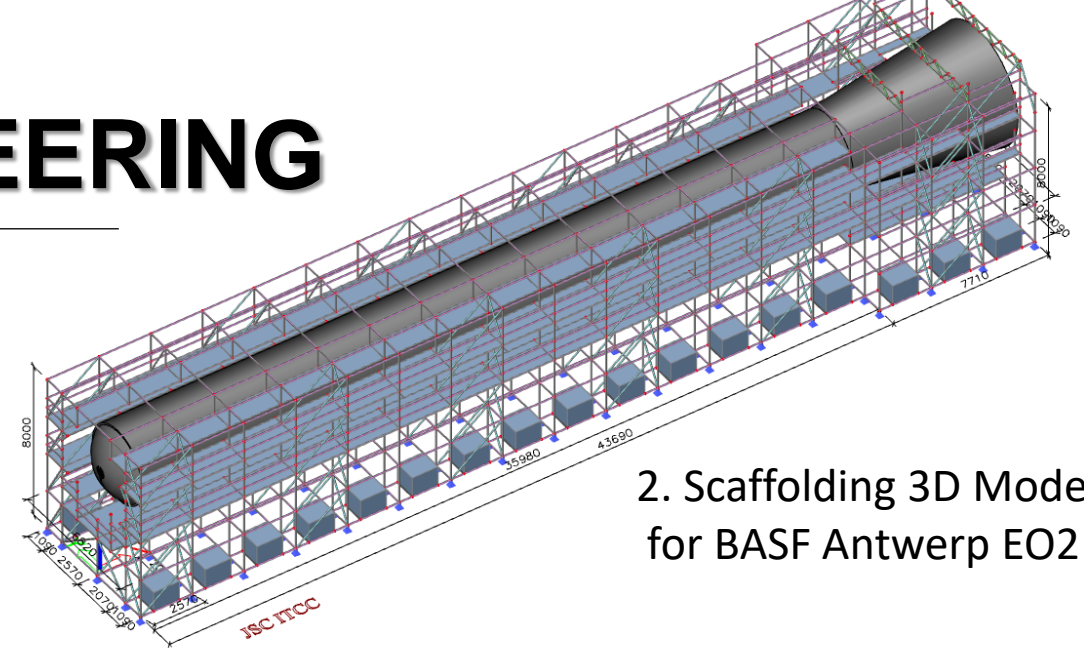
X 500

ITCC
Together we build success

SCAFFOLDING 3D ENGINEERING



1. 3D Model BASF Ludwigshafen (Germany)



2. Scaffolding 3D Model for BASF Antwerp EO2



3. 70m. Height Scaffolding for Orlen Lithuania



CASE PROJECT – BASF Ludwigshafen

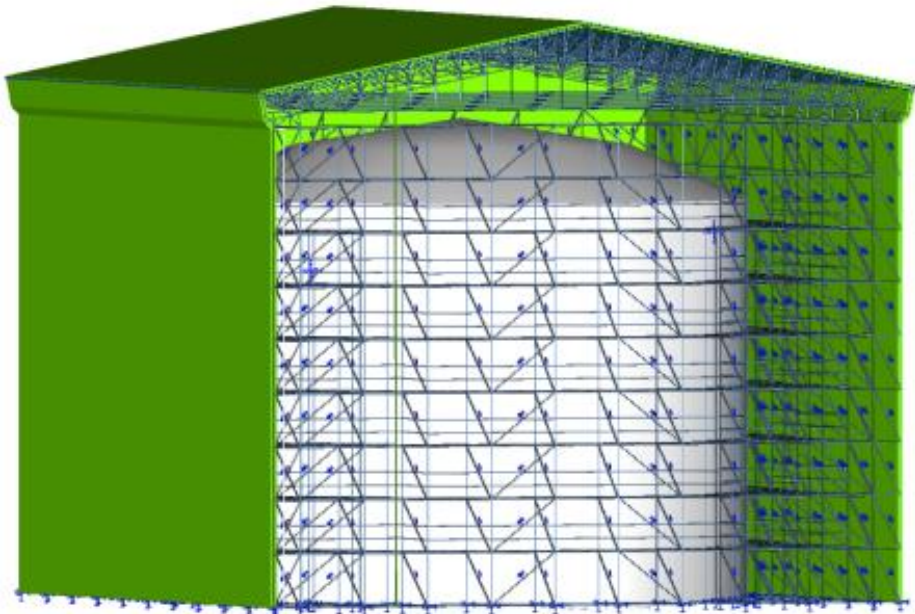
CONTRACTOR - ITCC

Project - B3711 Tank Scaffolding with Antistatic B1 Grade Tarpaulin full cover.
Transparent Roof from Layher Cassete materials.

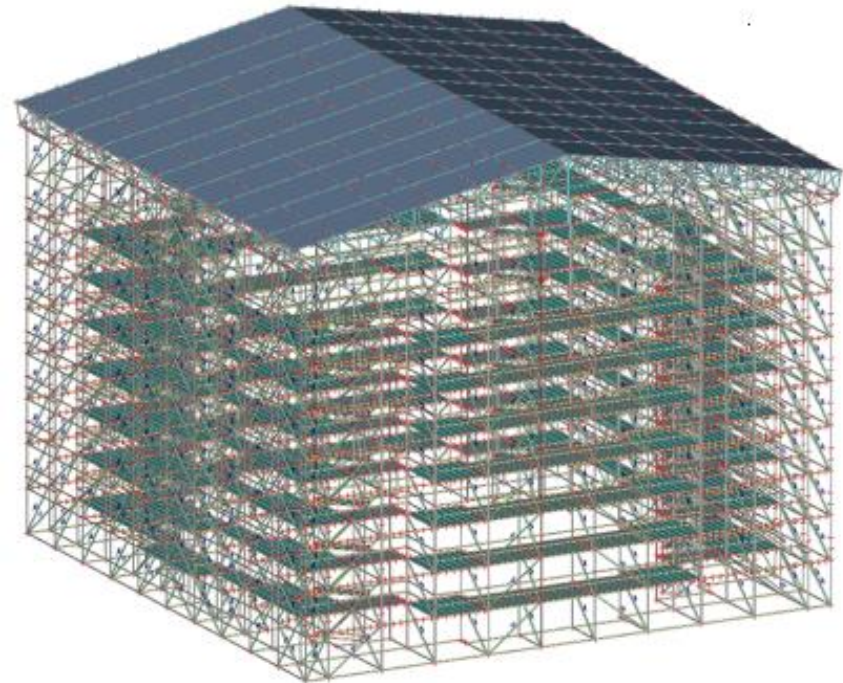
Total working hours - 2.173

Scaffolding - 4.950 m³

Accidents - 0



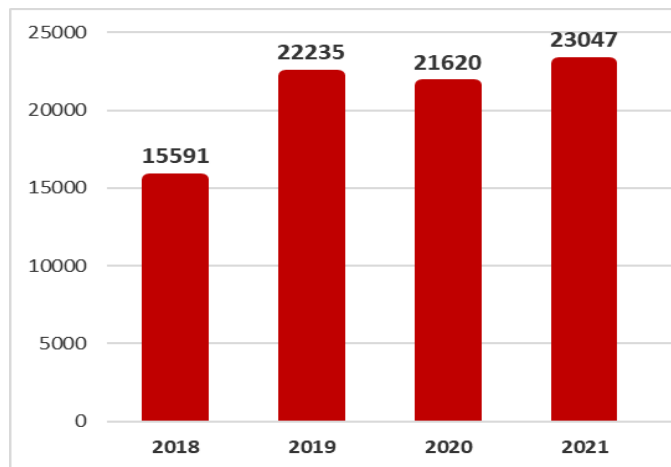
Drawings created
in-house
with Scia Engineer
20 software.



INSULATION

- Fire proofing.
- Thermal insulation.
- Cryogenic insulation.
- Insulation mattresses.
- Noise protection & acoustics.

Total number of insulations works m²



We work according to standards:
CINI, SFS.

INSULATION



ZIGO Tech

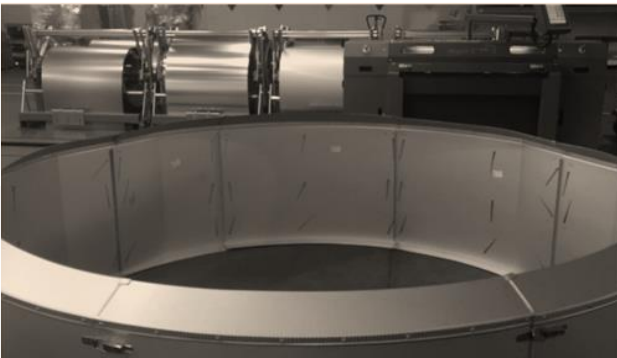
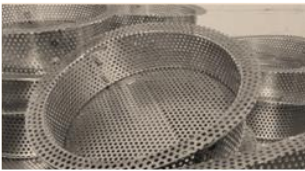
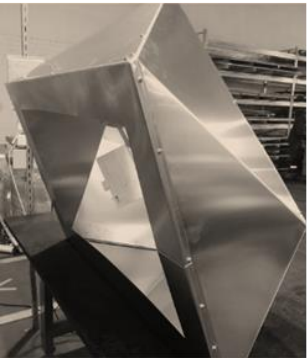
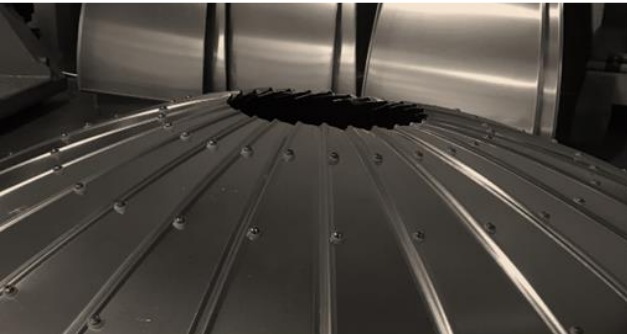
- Quick delivery time;
- Two Fiber Lasers and "MABI" machinery for accuracy and efficiency, "SOLIDWORKS" software Engineering.
- Tailor made solutions;
- Aluminum, Aluminum zinc, Stainless and Galvanized Steel, Coated Platal, Stucco. Thickness from 0,3mm to 1,2mm.
- 1500 m² workshop
- Mobile workshop possibility;
- Safety (VCA-VOL, VCA-B).

We produce:

- Pipe cladding;
- Equipment cladding;
- Insulation Boxes;
- Sheet metal parts;
- Small metal constructions.



ZIGO Tech



MAINTENANCE CONTRACTS



BASF Ludwigshafen
(Scaffolding and Insulation)
2020 – 2023



TOTAL Antwerp
(TPA and part of TRA)
Scaffolding, Insulation
and painting
2021 – 2023
2021 – 2022



ORLEN LIETUVA (Refinery)

Maintenance contract for
scaffolding, insulation and
refractory works

2012-2013
2013-2015
Only one contractor -
2016-2021



Klaipeda shipyard
Maintenance contract for
scaffolding (+hanging
scaffolding)

2014-2015
2015-2017
2017-2019
2019-2021

CONTACTS

JSC ITCC

Company code: 301851754

VAT code: LT100004302212

Luminor Bank AB

Acc./c.: LT024010051003595180

T: +370 663 71774

E-mail: info@itcc.lt

www.itcc.lt



TOGETHER WE BUILD SUCCESS



LITHUANIA

OFFICES:

**KLAIPEDA
MAZEIKIAI**

BELGIUM
POLAND
GERMANY

**ANTWERP
WARSAW
LUDWIGSHAFEN**



itcc.lt



/itcc



/itcc.lt